

PRESENTATION 2026



E1 batusan MAKİNA SANAYİ VE TİCARET A.Ş. 6D-0995	
Standard	: API 6D-TRUNNION
Standard	: API 6D-TRUNNION
Ölçü	: DN 300
Boyut	: DN 300
CLASS	: CLASS 150
Basmaç/Çalışma Sıcaklığı	: -29°C = 20 Bar
PRESSURE / TEMPERATURE RATING	: +100°C = 18 Bar
Gövde Malzeme	: ASTM A-105
BODY MATERIAL	: ASTM A-105
İç Aksamlar	: 420/420/PTFE
TRIM IDENTIFICATION	: 420/420/PTFE
Vana Boyu	: 610 mm
FACE-TO-FACE DIM.	: 610 mm
Üretim Tarihi	: 31.08.2021
DATE OF MANUFACTURE	: 31.08.2021
Seri No	: 004
SERIAL NUMBER	: 004
<input checked="" type="checkbox"/> DBB <input type="checkbox"/> DIB-1 <input type="checkbox"/> DIB-2	
www.batuvana.com	



Batuvalve by Numbers

- **15,000,000+ USD Total Annual Turnover across two strictly separated production divisions:**
 - **Industrial Division (API 6D / High-Performance): ~\$8,000,000 USD revenue (~8,000+ units). Dedicated machinery & strict QA/QC for heavy-duty clients.**
 - **Commercial Division (LPG / General Purpose): ~\$7,000,000+ USD revenue (~100,000+ units). High-volume, standardized production.**
- **170 Employees total in Batusan main factory and in machining factory in Sakarya**
- **6-420 Bar Pressure range , 700 Bar test capacity**
- **7000 sqm total area in Batusan main factory , 3000 sqm in sister company for machining in Sakarya**
- **A team of 12 Mechanical Engineers in R&D , Quality and Production**
- **The R&D team is managed by the leaders ; An industrial engineer with Phd degree (Burak Türemen) and a mechanical engineer with masters degree.**
- **We are Independent, our production capacity is controlled by us.**

The European Material Guarantee: No Compromise on Metallurgy



- **Premium suppliers compliant with the high manufacturing and quality standards set by our organization** (Regular audits of our suppliers)
- **Compliant with the main manufacturing standards**
- **100% European Origin Raw Materials:** Sourced from premium mills ; BGH(Germany) and Valbruna(Italy)
- **100% European Origin Ball and Seat Sets** for Metal to Metal Ball Valves: Sourced from premium suppliers ; AVValves(Italy) and Hutchinson(UK)
- **DEVLON V-API, PEEK and PTFE** sourced from Ensinger(Germany) and James Walker(UK)
- **Risk Elimination:** Immunizes supply chain against HIC/SSC risks associated with Asian steel.
- **Best of Both Worlds:** Metallurgical integrity of Western Europe leveraged by the competitive efficiency of Turkish manufacturing.
- **Traceability:** Full European 3.1 Certification for every component.

Manufacturing Excellence Through Vertical Integration and Safety



Total Control: 100% in-house production. No outsourcing of critical processes



Proven Capacity and Safety: 7000m² Batusan + 3000m² TDC Makina facility backed by a local industrial ecosystem, ensuring scalable capacity for surge demands. Safety first mentality. Accident free for 10+ years.



Quantifiable Quality: All valves are tested 100% in-house. Computer controlled leak detection with precise sensors. Crucial for reducing fugitive emissions.



The Ultimate Guarantee: Full process control enables an industry-leading **2-Year Unlimited Warranty**.







Engineering and Design Mastery.

- **Dynamic R&D Department:** A sign of long-term supplier maturity.
- **Continuous Improvement:** A dedicated team constantly refining designs, such as our Pig Ball Valves
- **Custom Solutions:** Full design capability to meet specific operational requirements.
- **Modern Tech:** Utilizing latest CAD/Cam software for precision engineering before metal is ever cut.



Always Strive for Improvement

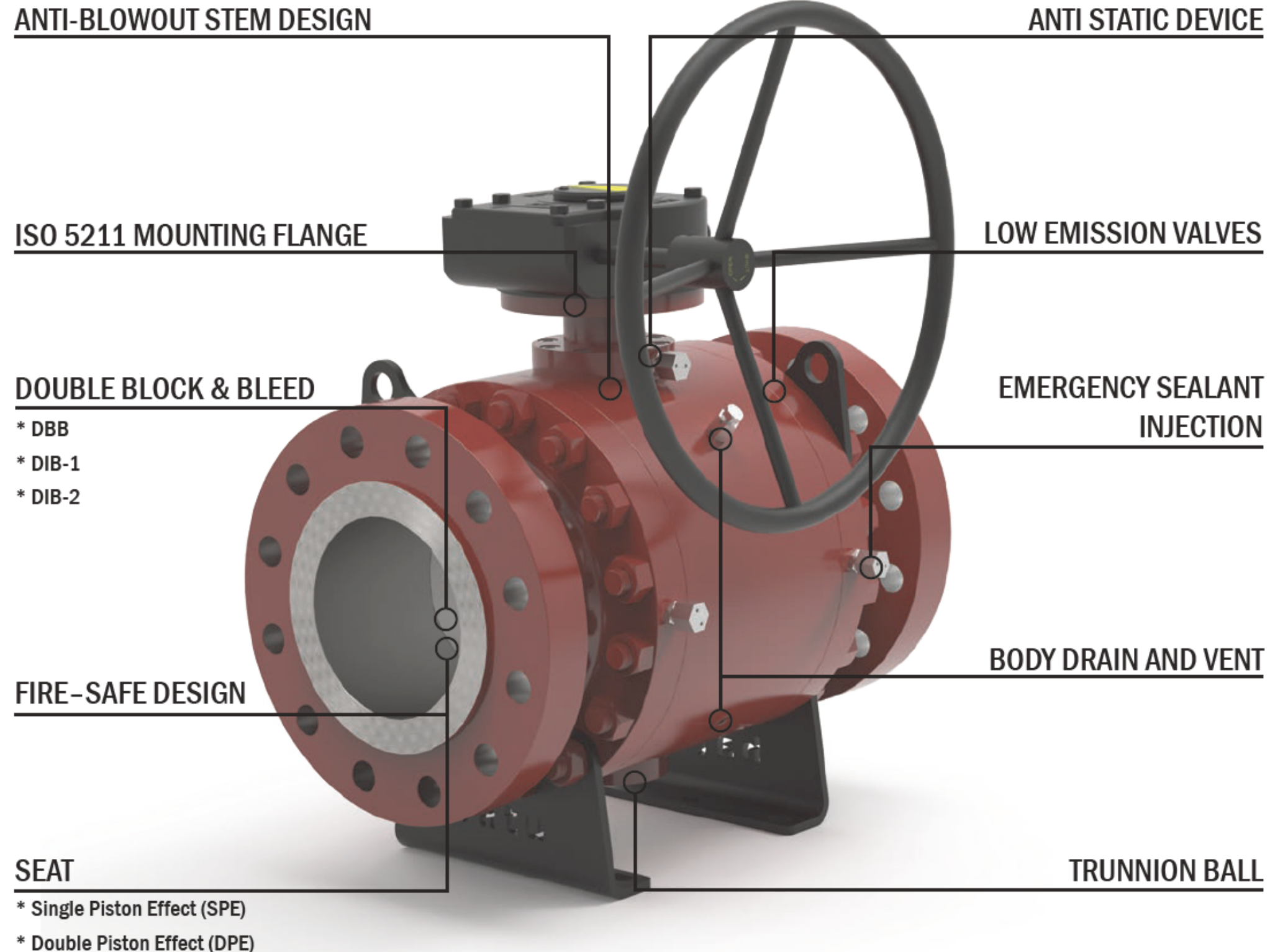




SPLIT BODY TRUNION BALL VALVE SPECIFICATIONS

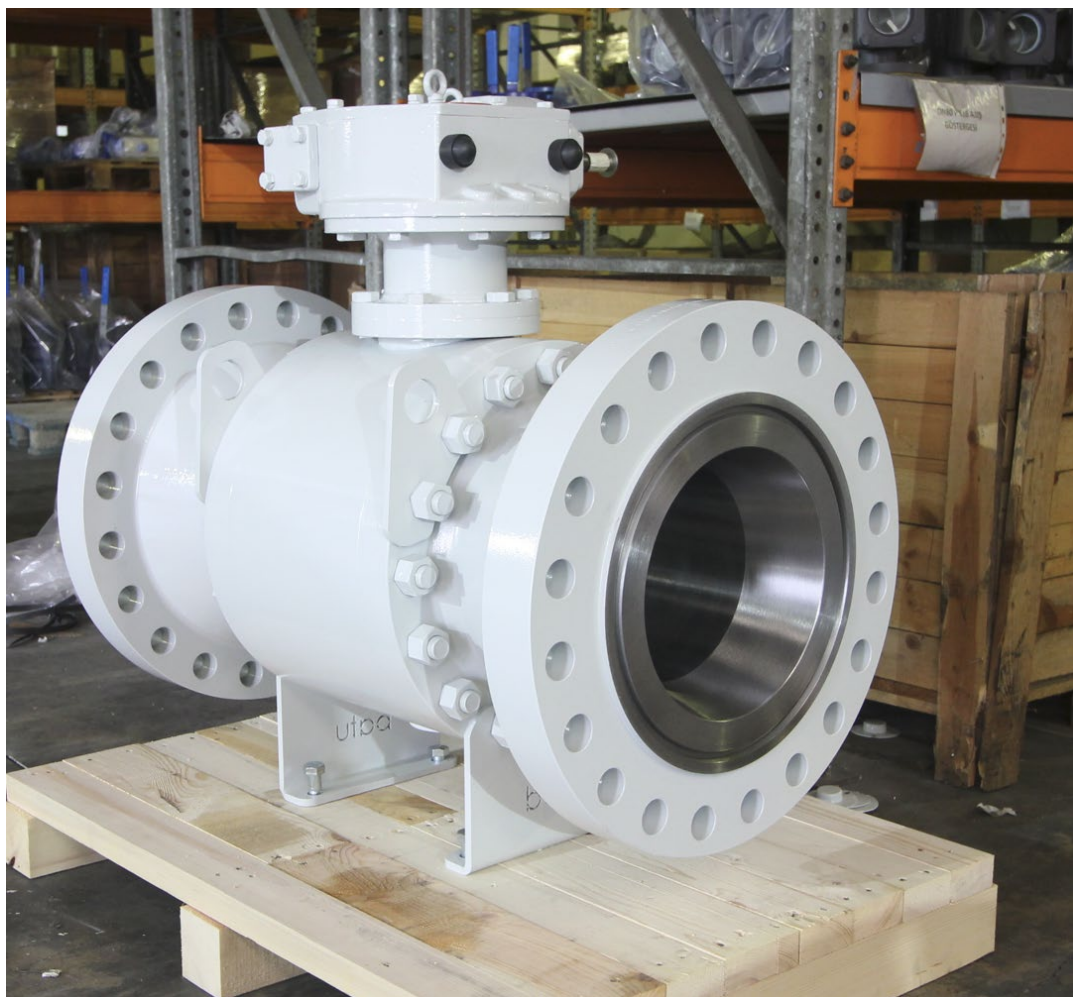
Batu API 6D trunion ball valves are designed to include many features for you as a result of a detailed R&D study. Extra options are available upon request.

LOW TORQUE BALL VALVES



API 6D SPLIT BODY FLOATING/TRUNNION BALL VALVE

DIMENSIONS	ASME B 16.10 (1/2" - 24")
CONNECTIONS	ASME B 16.5, ASME B 16.25, ASME B 1.20.1
WORKING PRESSURE	CLASS 150 (PN 20), CLASS 300 (PN 50), CLASS 600 (PN 100), CLASS 900 (PN 150), CLASS 1500 (PN 250), CLASS 800 Lbs (PN 55), CLASS 2500 (PN 420)
WORKING TEMPERATURE	-46 °C / +210 °C
USAGE AREAS	Natural Gas, LPG-LNG, Fuel-Oil, Pressurized Air and Other Gases etc.



API 6D DOUBLE BLOCK AND BLEED (DBB) BALL VALVE

DIMENSIONS	ASME B 16.10 (1/2" - 24")
CONNECTIONS	ASME B 16.5
WORKING PRESSURE	CLASS 150 (PN 20), CLASS 300 (PN 50), CLASS 600 (PN 100), CLASS 900 (PN 150), CLASS 1500 (PN 250), CLASS 2500 (PN 420)
WORKING TEMPERATURE	-46 °C / +210 °C
USAGE AREAS	Natural Gas, LPG-LNG, Fuel-Oil, Pressurized Air and Other Gases etc.



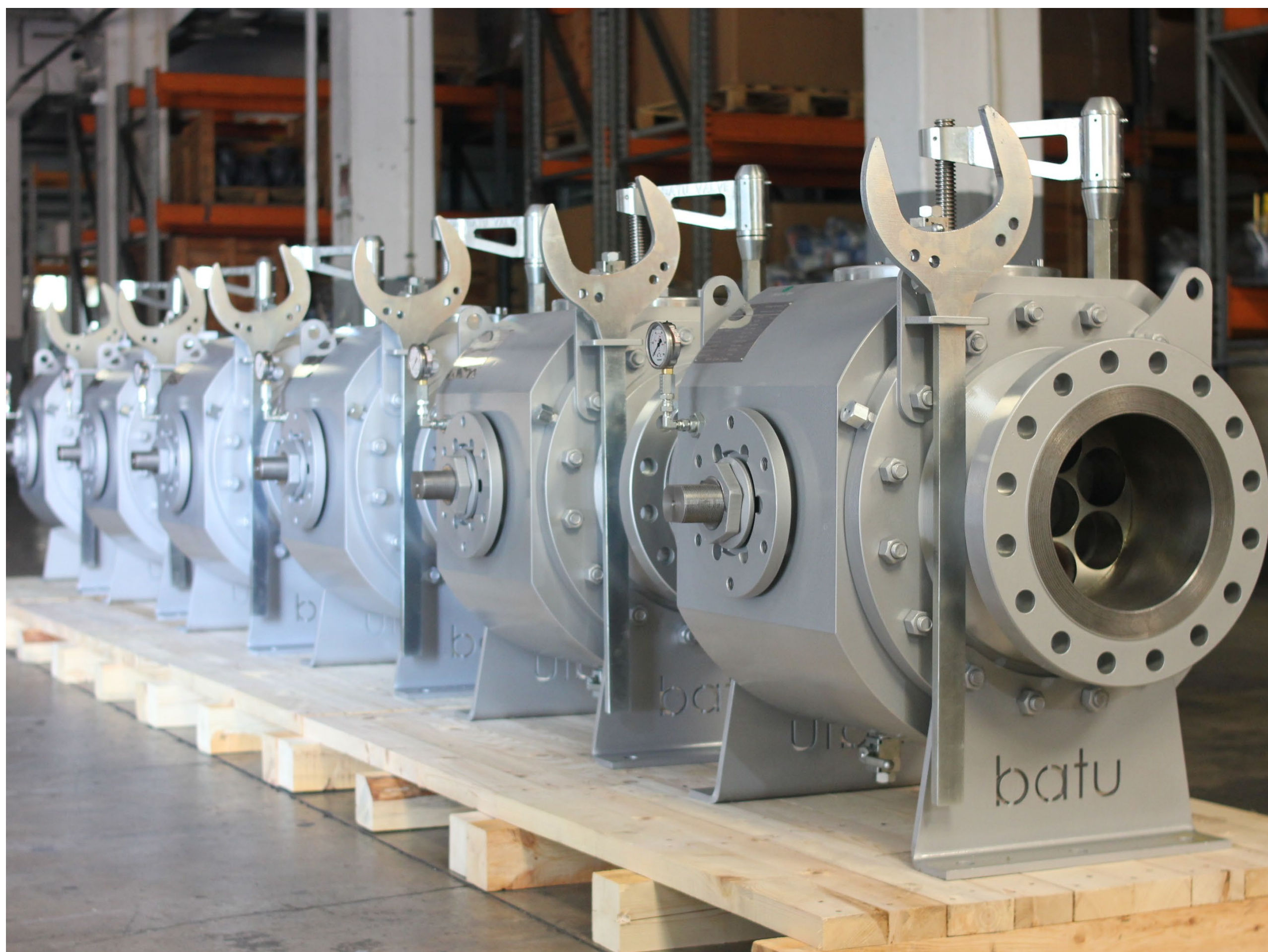
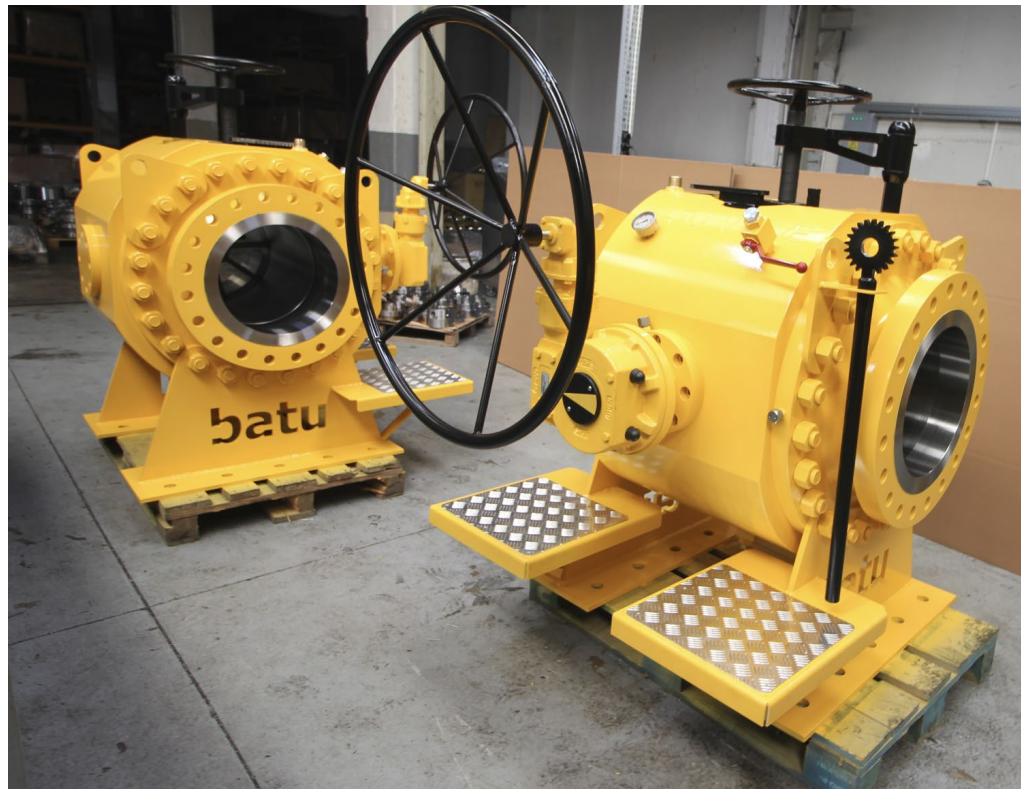
COMPACT BALL VALVES

DIMENSIONS	ASME B 16.10 (2" - 24")
CONNECTIONS	ASME B 16.5, ASME B 16.25, DIN EN 1092-1
WORKING PRESSURE	CLASS 150 (PN 20), CLASS 300 (PN 50), CLASS 600 (PN 100), CLASS 900 (PN 150), CLASS 1500 (PN 250), CLASS 2500 (PN 420)
WORKING TEMPERATURE	-46 °C / +210 °C
USAGE AREAS	Natural Gas, LPG-LNG, Fuel-Oil, Pressurized Air and Other Gases etc.



API 6D PIG BALL VALVE LAUNCHER AND RECEIVER

DIMENSIONS	BATUSAN SPECIAL (2" - 24")
CONNECTIONS	ASME B 16.5
WORKING PRESSURE	CLASS 150 (PN 20), CLASS 300 (PN 50), CLASS 600 (PN 100), CLASS 900 (PN 150), CLASS 1500 (PN 250), CLASS 2500 (PN 420)
WORKING TEMPERATURE	-46 °C / +210 °C
USAGE AREAS	Natural Gas, LPG-LNG, Fuel-Oil, Pressurized Air and Other Gases etc.



The Merits of our Pig Ball Valves: Compact, Safe, Efficient

- **"All-in-One" Efficiency**

Combines valve, launcher, and bypass into one compact unit. Reduces footprint by **up to 80%**—ideal for offshore platforms and tight manifolds. Eliminates extra piping, supports, and installation labor.

- **Uncompromised Safety (HSE)**

Mechanical safety lock prevents opening the door while under pressure. Integrated vent and drain points ensure the cavity is depressurized before access.

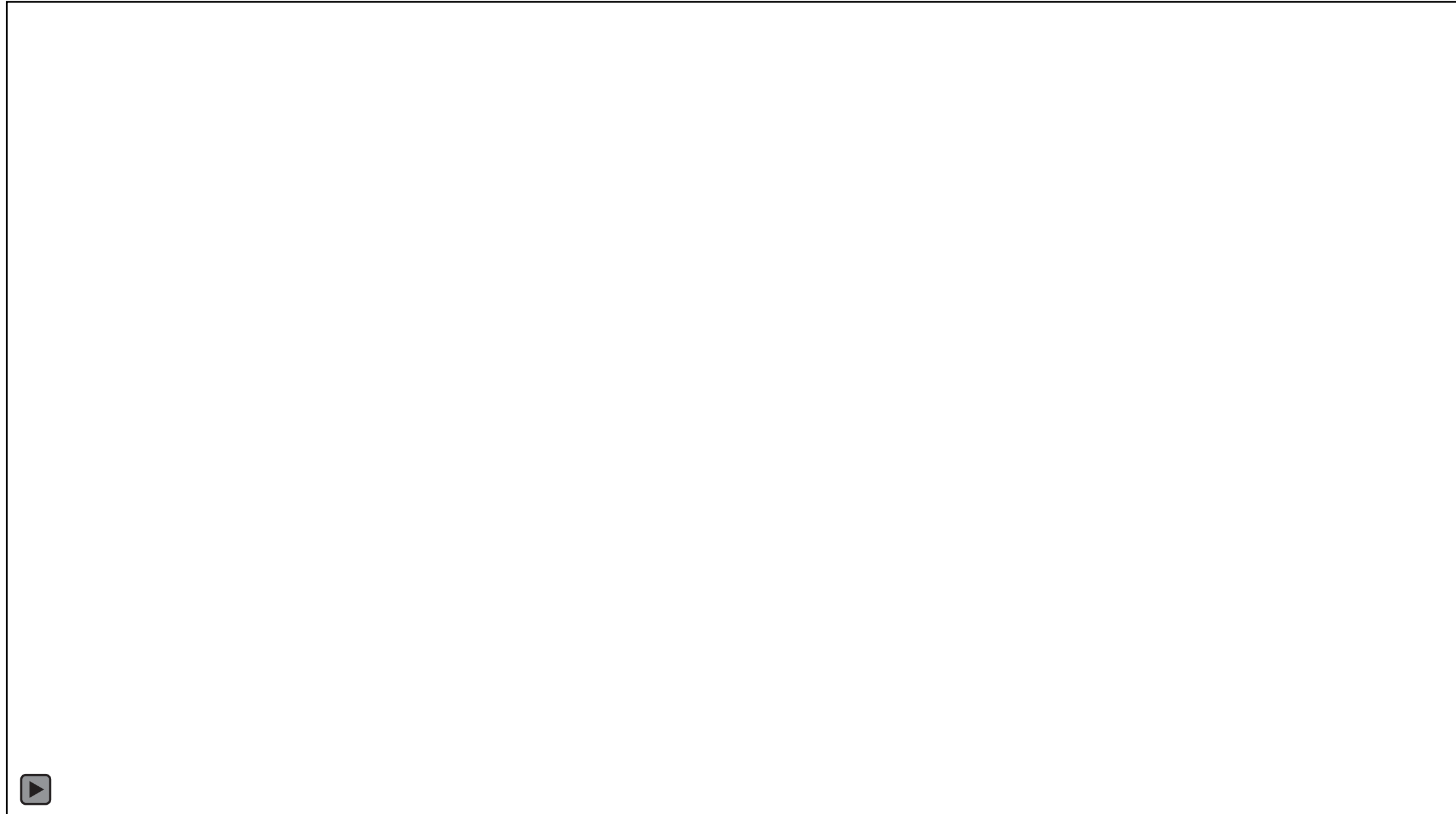
Design guarantees isolation during pig loading.

Specially designed guides prevent pinching of the pig to prevent a stuck valve situation.

- **The Perenco Advantage**

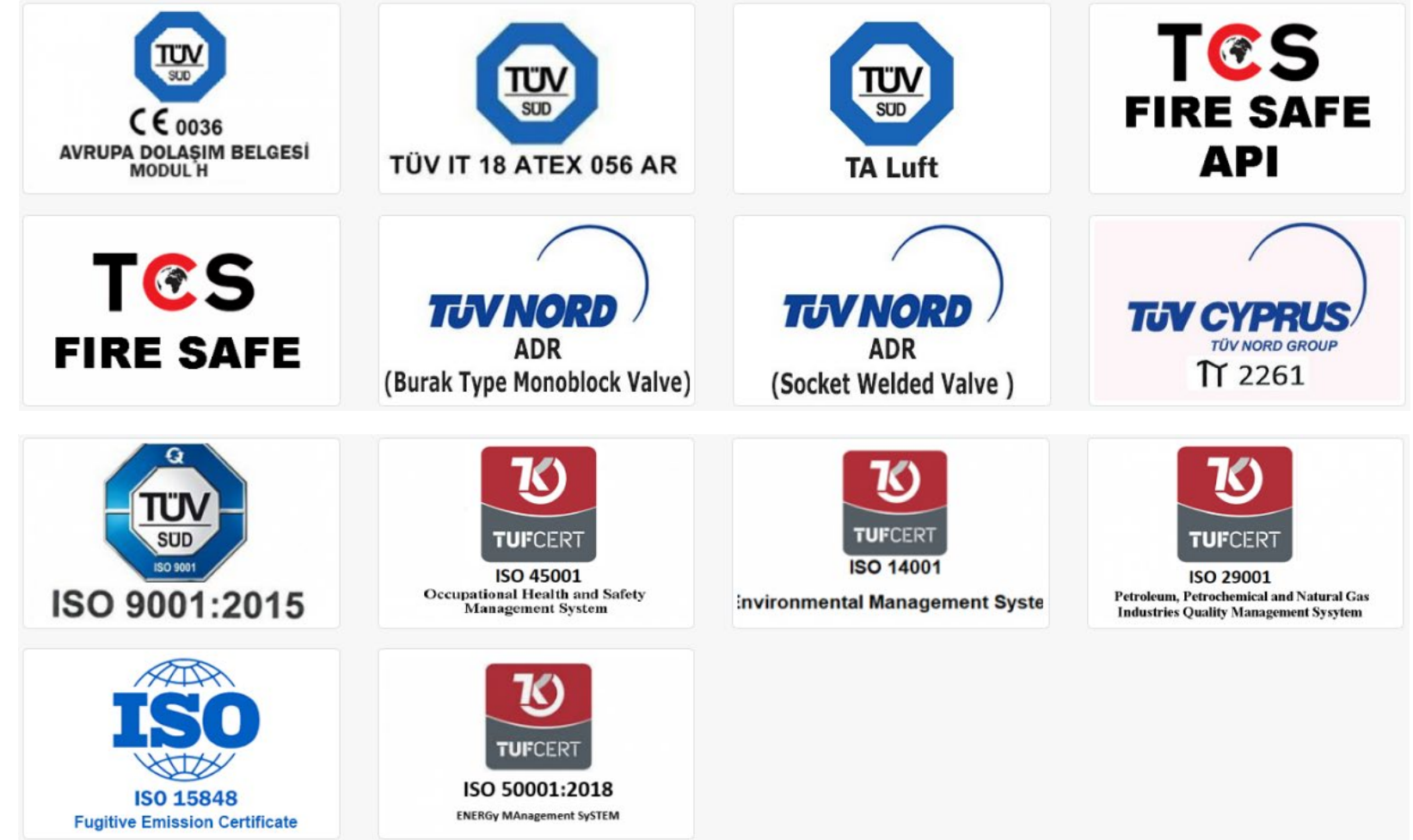
Proven Reliability, Already successfully commissioned on Offshore Platforms (Vietsovetro).

Loading/retrieving pigs takes minutes, minimizing production downtime. Fewer components mean fewer potential leak paths and less upkeep.



Certificates

- API-6D-0995
- ISO 15848 Fugitive Emissions
- ISO 9001:2008 / TÜV SUD
- ISO 45001
- ISO 14001
- ISO 29001
- ISO 50001:2018
- TÜV SÜD CE 0036 DGR-0036-QS-1226-23
- TÜV SÜD IT 18 ATEX 056 AR
- TÜV SÜD TA Luft
- FIRESAFE API 6FA , API 607 , ISO 10497



Machinery Batusan + TDC Makina (Production & Testing)

- Welding Robot: 3
- Multi Headed Drill: 3
- CNC Lathe: 12
- CNC Mill: 11
- NC Pittler Revolver: 2
- CNC Revolver Lathe: 14
- Ball Valve Hydrostatic Testing Machine: 7
- Portable Ball Valve Hydrostatic Testing Machine: 1
- TS EN 331 - Test Station: 1
- FIRE SAFE - Test Station: 1
- CMM Measuring Machine: 2

We are able to provide you with all the necessary flexibility because we are independent with the machining capacity we have.



DOOSAN DNM 6700
4 Pieces - DOOSAN DNM 6700 - VERTICAL MACHINING CENTER



SMTCL VMC 1000 B MODEL
1 Pieces - SMTCL VMC 1000 B MODEL - VERTICAL MACHINING CENTER



FRONTIER MCV-1170
1 Pieces - FRONTIER MCV-1170 - VERTICAL MACHINING CENTER TJR HR-Div20r



DOOSAN PUMA GT 2600
3 Pieces - DOOSAN PUMA GT 2600 - SINGLE TURRET TWO-AXIS HORIZONTAL



HYUNDAI WIA L300 LA MODEL
1 Pieces - HYUNDAI WIA L300 LA MODEL - TURNING CENTER



HYUNDAI WIA L280 MODEL
1 Pieces - HYUNDAI WIA L280 MODEL - TURNING CENTER



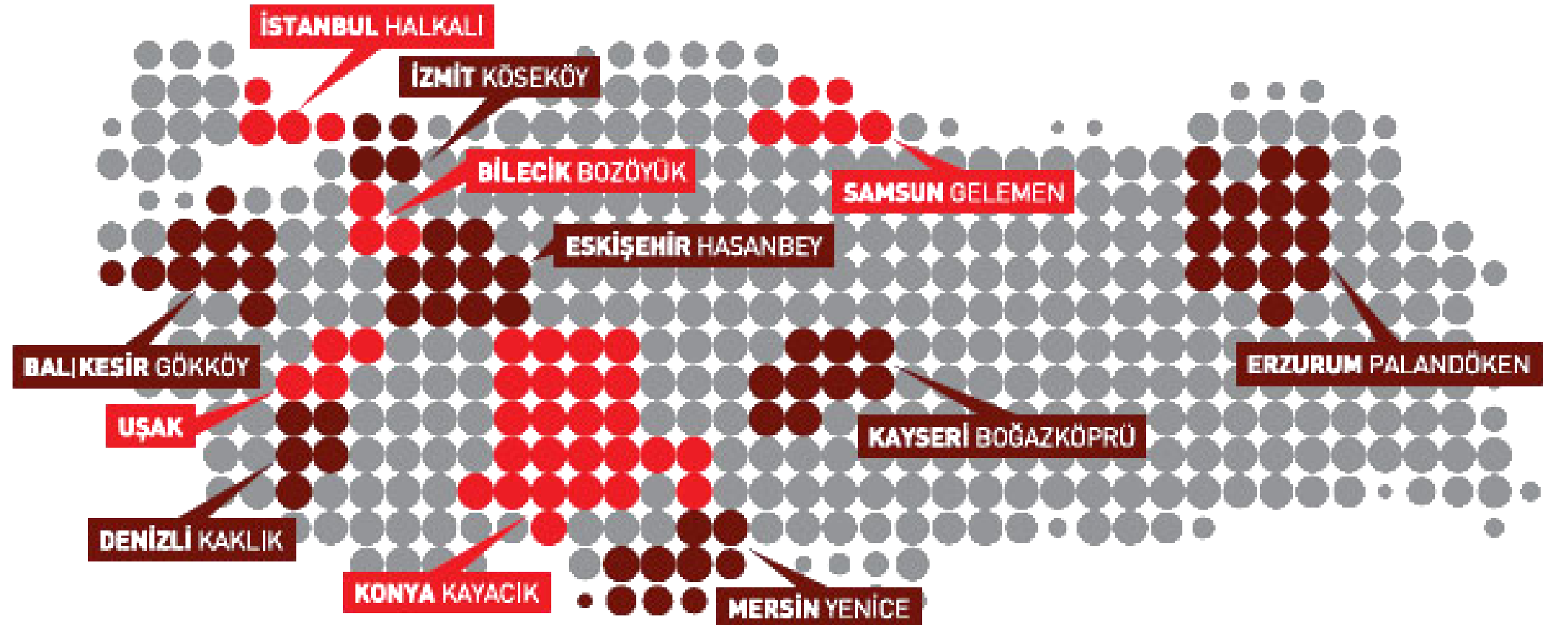
DOOSAN V8300
2 Pieces - DOOSAN V8300 - SINGLE TURRET VERTICAL



DOOSAN V8300M C AXIS
1 Pieces - DOOSAN V8300M C AXIS - SINGLE TURRET VERTICAL

BatuValve Has the Dominant Position in Domestic Market

- 47+ Years Prestige
- Brand Reliability
- Long Term Service & Guarantee
- Fast Delivery
- 2,000,000 Euro Stock Availability
- Supply Solutions

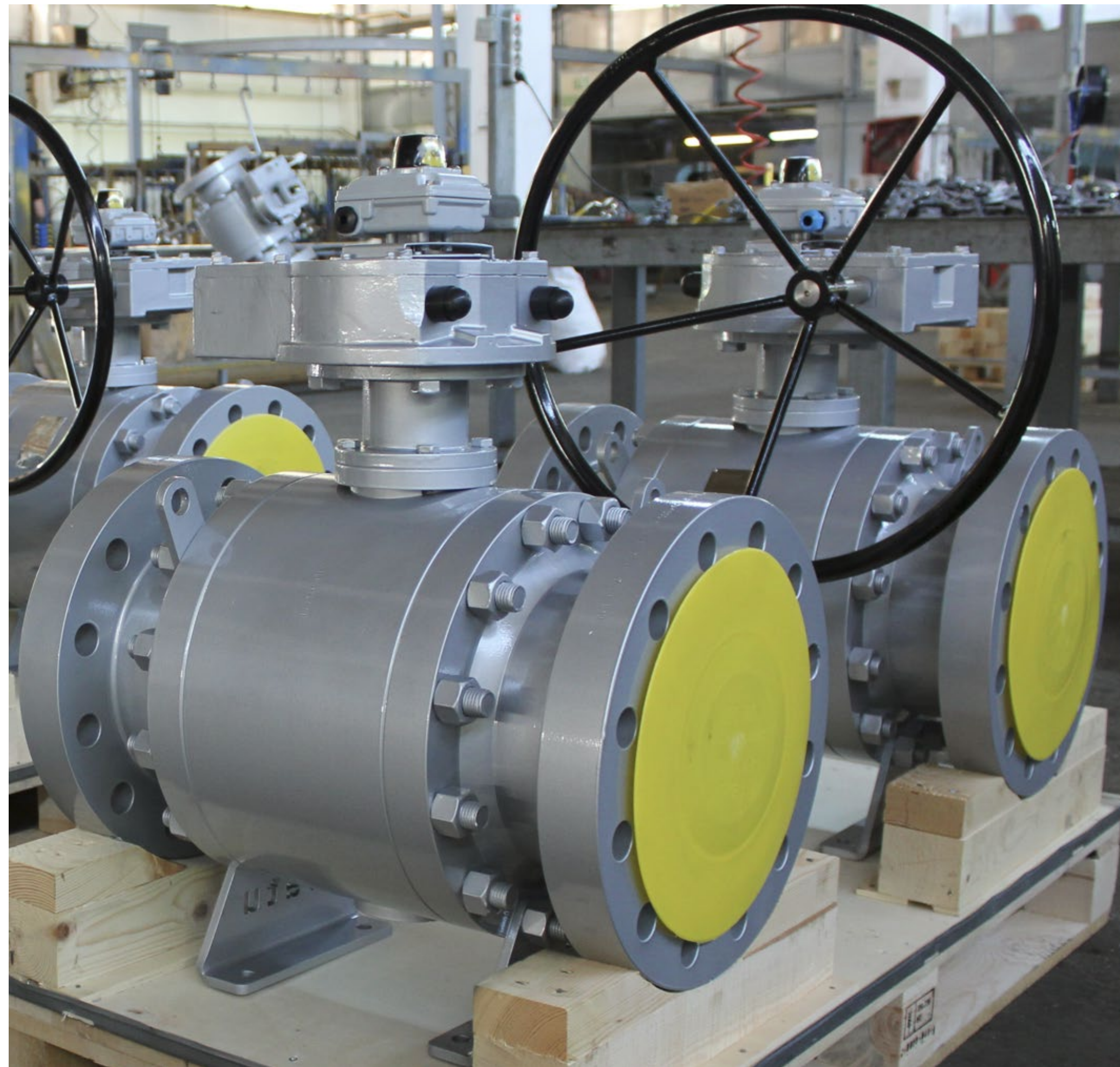


Main Clients With Completed Projects

- **Turan Drilling & Engineering:** (SOCAR / KCA Deutag JV) (Azerbaijan) - API6D DBB and Ball Valves - 2 to 12" Class 1500
- **Petrovietnam & Vietsovpetro:** (AVL) (Vietnam) - API6D DBB, Pig, Compact and Ball Valves - 2 to 16" Class 300 – Class 2500
- **Sonatrach:** (Algeria) - API6D DBB and Ball Valves - 2 to 16" Class 1500
- **Romgaz & Transgaz:** (Romania) - API6D DBB and Ball Valves - 2 to 8" Class 900
- **FAS (Flüssiggas-Anlagen):** (Germany) - Ball Valves – Oem producing for FAS brand for 25+ years.
- **Brunnbauer:** (Austria) - API6D DBB and Ball Valves - 2 to 10" Class 1500 - Oem producing for Brunnbauer brand for 10+ years
- **Pietro Fiorentini:** (Italy) - API6D DBB and Ball Valves - 2 to 16" Class 1500
- **Kar Group, Taqa Atrush, Petrofac, Taurus Arm:** (Iraq) - API6D Ball Valves - 2 to 24" Class 900
- **Eiffage:** (France) - API6D DBB, Ball Valves and 3Way Ball Valves - 2 to 12" Class 1500
- **STEG:** (Société Tunisienne de l'Electricité et du Gaz) (Tunisia) - API6D Ball Valves - 2 to 12" Class 900
- **Marsa Maroc:** (Marocco) - API6D Pig and Ball Valves - 2 to 12" Class 300 – Class 1500
- **Weltek:** (Nigeria) - API6D Ball Valves
- **Perenco:** (France) API6D DBB and Ball Valves - 2 to 16" Class 1500
- **Makeen Energy:** (Europe)
- **Trouvay&Cauvin:** (Ivory Coast)

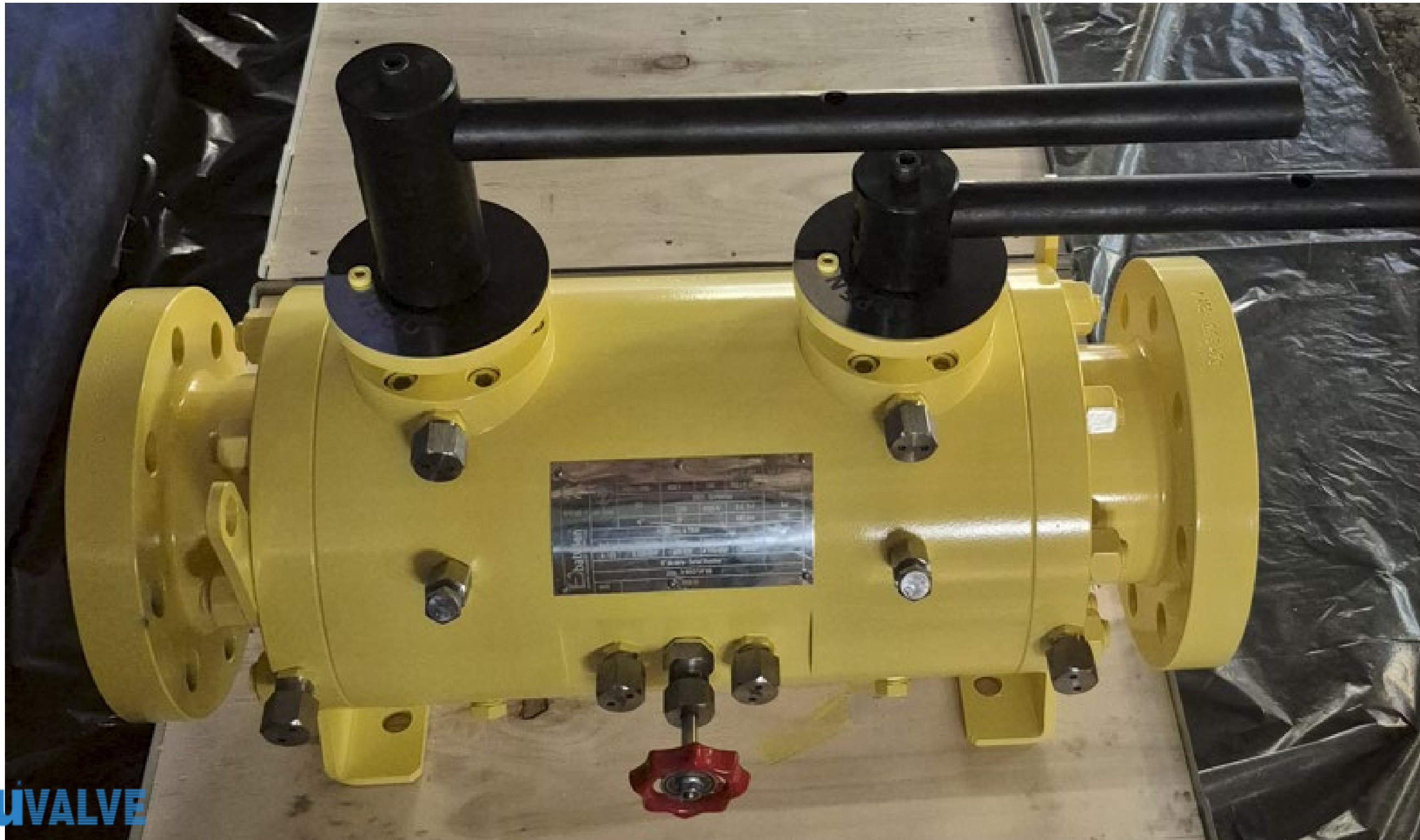
PERENCO, a Well Known Player

- 3500+ Valves already installed on site
- Mastery of your specifications
- Manual and motorised ball valves, pig valves
- Ability to offer high-performance standards already validated by your subsidiaries
- A350 LF2,17-4 PH, Metal to Metal Valves
- DEVLON and PEEK material for high pressure classes
- C5M offshore painting with 350 Micron minimum thickness
- Functional and Delta P tests
- Cryogenic Ball Valves



Client : **Turan Drilling & Engineering (Azerbaijan):**

- **End User:** Joint Venture of **SOCAR & KCA Deutag** (Managing procurement for BP assets).
- **Strategic Win:** Vendor Switch from **Merwede Valves (Netherlands) to Batuvalve.**
- **Significance:** Turan Drilling switched their sources from Merwede (a premium Dutch brand) to Batuvalve for their **API 6D Ball Valves** and **DBB Valves**, validating that Batuvalve matches Western European technical standards while offering superior commercial value.



Client: **Petrovietnam** (The National Oil Company) and its joint venture **Vietsovetro (Vietnam)**

•Vietsovetro (a Vietnam-Russia JV) operates the **White Tiger (Bach Ho)** field, a unique geological formation where oil is produced from fractured granite basement rock. This requires highly specific engineering solutions.

Product Application: The supply includes **API 6D Pig Ball Valves**, **API 6D DBB Valves**, and **High-Pressure Monoblock Valves**.

Offshore Criticality: On offshore rigs (like those in the White Tiger field), deck space is the most expensive real estate. The Batu Pig Ball Valve and High-Pressure Monoblock valves are strategic enablers here, replacing bulky launcher systems.



Client: Pietro Fiorentini S.p.A. (Italy)

End User: Sonatrach (Algeria).

Client: TIV Valves (Italy)



Client: FAS Flüssigas Anlagen

More than 25 years OEM production under the FAS German Brand

Client: Makeen Energy (Belgium)

Client: Brunnbauer (Austria)

More than 10 years OEM production under the Brunnbauer Austrian Brand

Client: Valvenok (England)

Client: Eiffage (France)



Clients:
BURUJ ENGINEERING



Client: **BullSupply (Ecuador)**
API6D Ball Valves and Pig Ball Valves

Client: **Flucontrol (Chile)**

Client: **Corsem Impex (Romania)**

End Users: **Transgaz , Romgaz**
Client: **Conti Chemical (Latvia)**

Client: **Pico Flow / Macel Plin (Hungary)**



Client : **Delancey Oilfield**
End Users : **TAQA Atrush:**
HKN Energy (Sarsang Block):
Petrofac (Basra):.
Taurus Arm Company:
Groupement Berkine:
Client: **Kar Group (Iraq)**



Client: **Technipro**
End User: **Marsa Maroc**
API6D Ball Valves and Pig Ball Valves



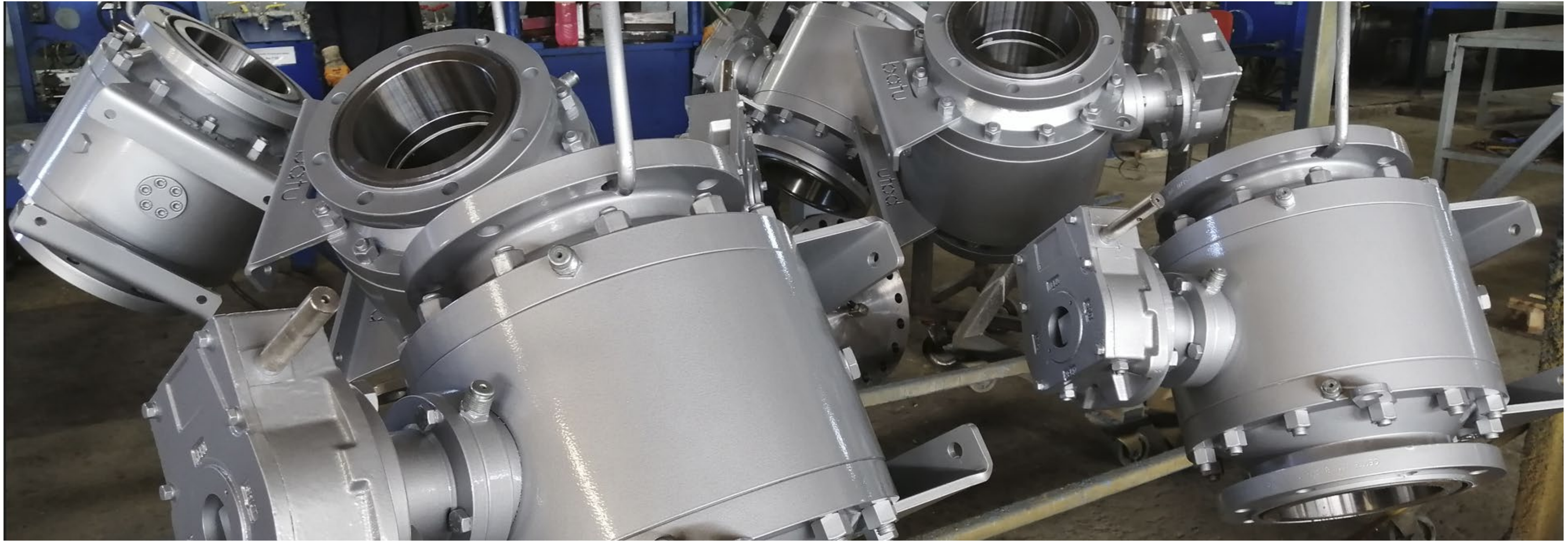
Client: **Pietro Fiorentini**

End User: **STEG (Société Tunisienne de l'Electricité et du Gaz) (Tunisia)**





Client: **Cherofrance**
End user: **Perenco**



The Strategic Choice for Next Decade



ALIGNMENT

A **'Fit-for-Purpose' supplier** for a **'Fit-for-Purpose' operator**. We are built for your world of brownfield optimization.



RESILIENCE

Metallurgical certainty (European steel) without the cost and lead-time penalties of traditional premium suppliers. A supply chain free from geopolitical risk.



AGILITY

A partner who moves at the speed of your most aggressive reactivation and development projects in Brazil, Africa, and Asia.

This alliance is a **strategic modernization** of your supply chain. We are **ready to prove it**.

THANK YOU VERY MUCH!

BATUSAN BATUVALVE

EXPORT@BATUSAN.COM

WWW.BATUVALVE.COM

The Pargo Cluster (Brazil) Offshore Space & Weight Constraints

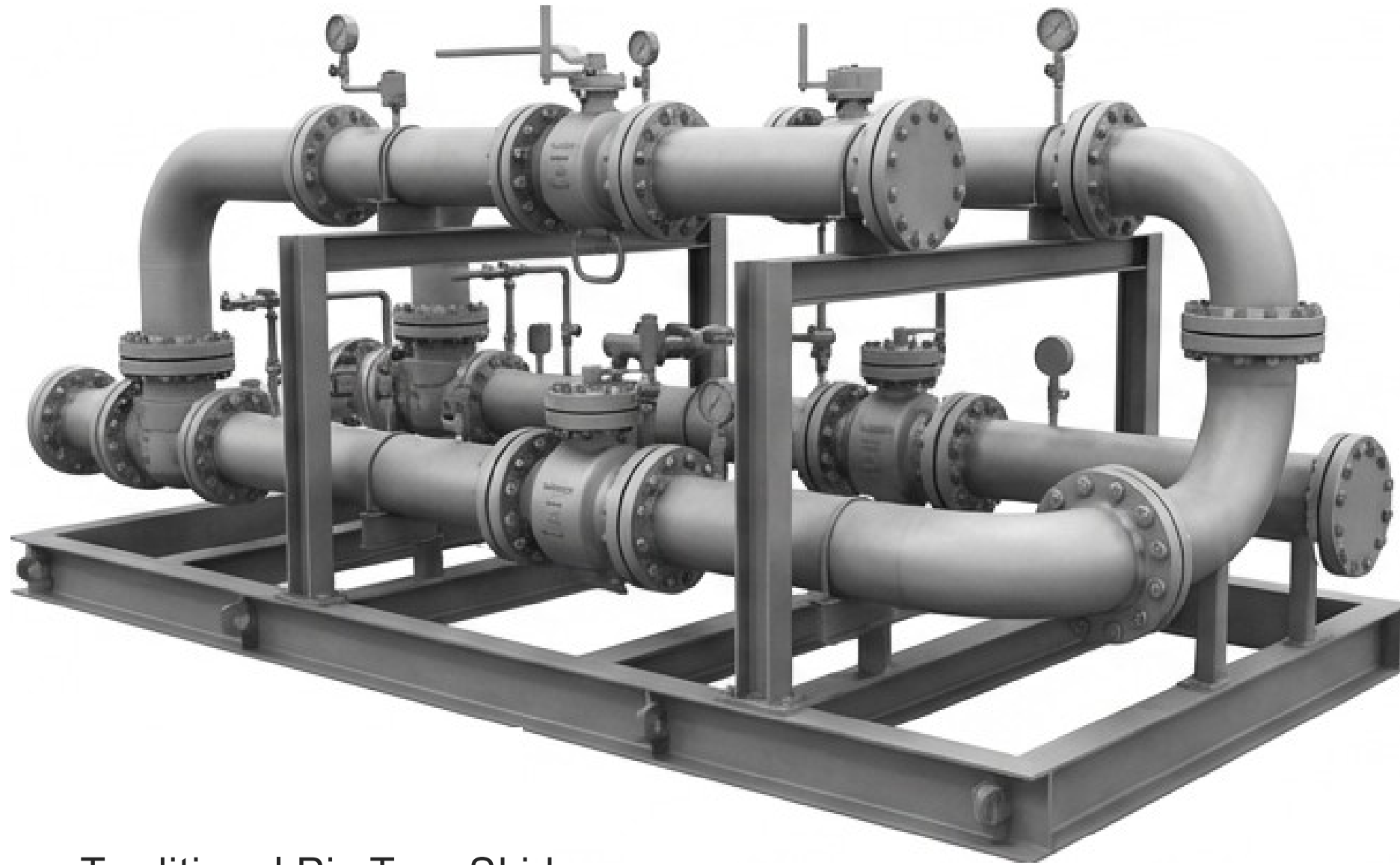
The Forensic Finding:

Aggressive retrofitting on space-constrained jackets means every square meter is prime real estate. Traditional, skid-mounted systems are an engineering liability for rapid upgrades.

The Impact: Spatial constraints directly limit the ability to debottleneck production from 2,800 to over 20,000 boepd.



The Technical Wedge: Solving Your Offshore Space & Weight Constraints



Traditional Pig Trap Skid

The Challenge

On aging offshore platforms like those in the **Pargo Cluster** (Brazil) or for the new **Kombi 2 MOPU** (Congo), deck space is finite and structural weight capacity is limited.



Integrated Pig Ball Valve

The Solution

Batuvalve's **Pig Ball Valve** integrates the launcher/receiver mechanism directly into the valve body, eliminating the need for a massive, dedicated skid. Vietsovetro in Vietnam successfully implemented our pig ball valves in their offshore oilrigs